

 [IP Office Installation: System Overview](#)



## IP Office Core Software (BIN Files)

Each IP Office control unit and expansion module contains and runs its own part of the IP Office core software. These parts take the form of .bin files (binary files).

IP400 control units and external expansion modules are supplied with a base level of core software .bin files loaded. Currently this base level is IP Office 2.1. Therefore one of the first steps of the installation process is to upgrade the modules from this base level to the level of IP Office core software required.

IP500 control units are supplied with a base level of IP Office software that acts as a software loader for upgrading the unit to the required software level. This software loader supports the LAN connection necessary for local PC to IP Office upgrade.

The .bin files for each IP Office software level are included on the IP Office Administrator Applications CD for that software level. They are installed from that CD as part of the IP Office Manager application. IP Office Manager can then be used to upgrade the .bin files loaded in the modules within an IP Office system.

Updated sets of software and bin files may also be made available through the Avaya support web site. See [Web Sites](#).

### • Software Level

The IP Office core software level is expressed in the form X.Y(Z), for example 2.1(27), where X is the major software level, Y is the minor level and Z is the build number.

The following rules apply to the core software level used by modules within an IP Office system and between linked IP Office systems.

- All modules within an IP Office should run the same level of core software. Doing otherwise will lead to incorrect operation of the system.
- By default the IP500 runs in a software mode called IP Office Standard mode. To run in full IP Office Professional mode requires the addition of various licenses.

### Upgrading

Upgrading is performed using the Upgrade Wizard tool within the IP Office Manager application (File | Advanced | Upgrade). It displays the systems it can detect, their existing software level and the levels it has available.

### • Check IP Office Technical Bulletins

Whenever upgrading check the latest IP Office Technical Bulletins for the various IP Office software releases involved before proceeding. These may contain information relating to changes that occurred after this document was completed. Bulletins are available from <http://support.avaya.com>.

### • Multi-Stage Upgrades

As indicated in the table below, the upgrade path may require several intermediate upgrades. Skipping an intermediate level may lead to incorrect system operation and configuration corruption. Multi-stage upgrades are only necessary for control units. External expansion modules can be upgraded directly between any two levels supported by the module.

Control Unit	.bin File	Unvalidated Only	Validated
<a href="#">Small Office Edition</a>	ip401ng.bin	2.0 > 2.1	2.1 > 3.0 > 3.1 > 3.2 > 3.2(999) > 4.2.
<a href="#">IP406 V2</a>	ip406u.bin	–	2.1 > 3.0 > 3.0(999) > 3.1 > 3.1(999) > 3.2 > 4.2.
<a href="#">IP412</a>	ip412.bin	1.3 > 2.1	2.1 > 3.0 > 3.1 > 3.2 > 4.2.
<a href="#">IP500</a>	ip500.bin	–	4.0.0 > 4.2.

### • WAN3 10/100 Modules

In systems containing these modules, it is recommended that control unit and any other external expansion modules are upgraded first before then upgrading the WAN3 10/100 module.

### • Large Systems

In systems with a large number of external expansion modules, for example an IP412 with 12 external expansion modules, it may be necessary to upgrade the control unit first and then the modules.

There are three methods that the IP Office may use for upgrading, these are Validated, Offline and Unvalidated.

### • Validated Upgrade

This is the preferred method and can be used with any IP Office system that already has IP Office 2.1 or higher software. By default the Validate option within the Upgrade Wizard is pre-selected. During this process, the required BIN files are

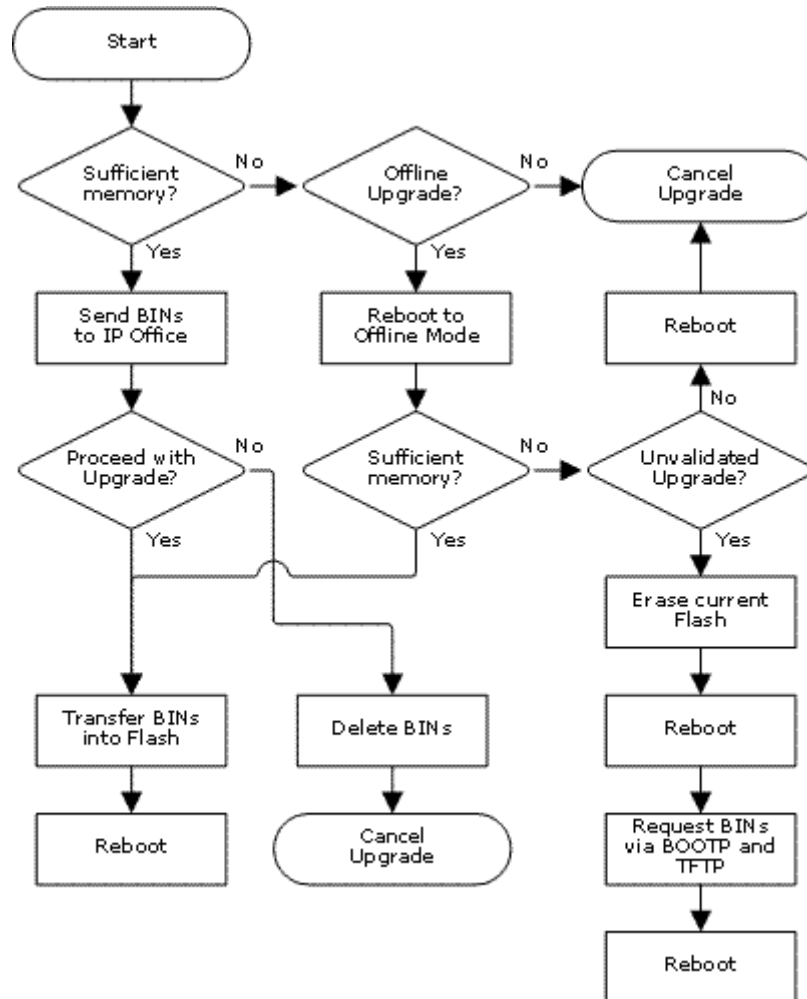
first transferred to the IP Office's RAM memory. Only when the files are received will the IP Office overwrite the existing software in its Flash memory and restart using the new files.

- **Offline Upgrade**

On some systems, it may not be possible for the validated upgrade to download all the BIN files required into the IP Office system's RAM memory. If this is the case, the IP Office will offer to reboot in Offline mode and then attempt to continue the validated upgrade. In offline mode the IP Office only supports the service necessary to allow upgrading, for example it does not support Small Community Networking (SCN). If in offline mode for more than 15 minutes without being upgraded, the IP Office will reboot again back to normal operation.

- **Unvalidated Upgrade**

This is the least preferred upgrade method. It should only be used from a PC directly connected to the IP Office and with a fixed IP address on the same LAN domain as the IP Office LAN1. This method involves erasing the existing software in the IP Office's Flash memory and then copying the new BIN files directly to the Flash memory. It uses BOOTP and TFTP and requires a BOOTP entry for the IP Office system to exist on the Manager PC. This method should not be used unless absolutely necessary.



© 2009 AVAYA  
 15-601042 Issue 19.v. -  
 13:07, 16 July 2009  
 (ip\_office\_core\_software.htm)

*Performance figures, data and operation quoted in this document are typical and must be specifically confirmed in writing by Avaya before they become applicable to any particular order or contract. The company reserves the right to make alterations or amendments at its own discretion. The publication of information in this document does not imply freedom from patent or any other protective rights of Avaya or others. All trademarks identified by (R) or TM are registered trademarks or trademarks respectively of Avaya Inc. All other trademarks are the property of their respective owners.*

[http://marketingtools.avaya.com/knowledgebase/ipoffice42en/mergedProjects/installation/ip\\_office\\_core\\_software.htm](http://marketingtools.avaya.com/knowledgebase/ipoffice42en/mergedProjects/installation/ip_office_core_software.htm)  
Last Modified: 16/04/2009